

RezEasy®

Adding Images



How To Document



ADDING PICTURES IN REZEASY TEMPLATES

The simplest way to show pictures of each property is to use the picture gallery feature of RezEasy. However, you can also add pictures to any of the property templates using the following format.

NAMING THE IMAGES

The first thing you must do is to decide how you want to name the images. Each image name should contain the property ID and must follow the same format, ie. The image names are the same except for the property ID.

EXAMPLES:

This example uses names that contain a description of the image.

First_Pick_Bedroom_0001.jpg
Dining_Shot_with_TV_0001.jpg
First_Pick_Bedroom_0002.jpg
Dining_Shot_with_TV_0002.jpg
First_Pick_Bedroom_0003.jpg
Dining_Shot_with_TV_0003.jpg
First_Pick_Bedroom_0004.jpg
Dining_Shot_with_TV_0004.jpg

This example uses a sequence number, ie. _1 and _2

0001_1.jpg
0001_2.jpg
0002_1.jpg
0002_2.jpg
0003_1.jpg
0003_2.jpg
0004_1.jpg
0004_2.jpg

NOTES:

1. The only part of the image name that changes is the property ID (shown in red)
2. Each property should have the same number of images.
3. Avoid using spaces in image names. This can cause problems when viewed via the Internet. Using a dash – or the underscore character _ is safer.

Place the images in folder ...\\images\\

PLACING THE IMAGE TAGS IN TEMPLATES

You can place images in any of the property templates, but you will probably want to restrict images to the “about” and “pictures” templates (about.html and pictures.html). These are located in folder ...\\TEMPLATES\\

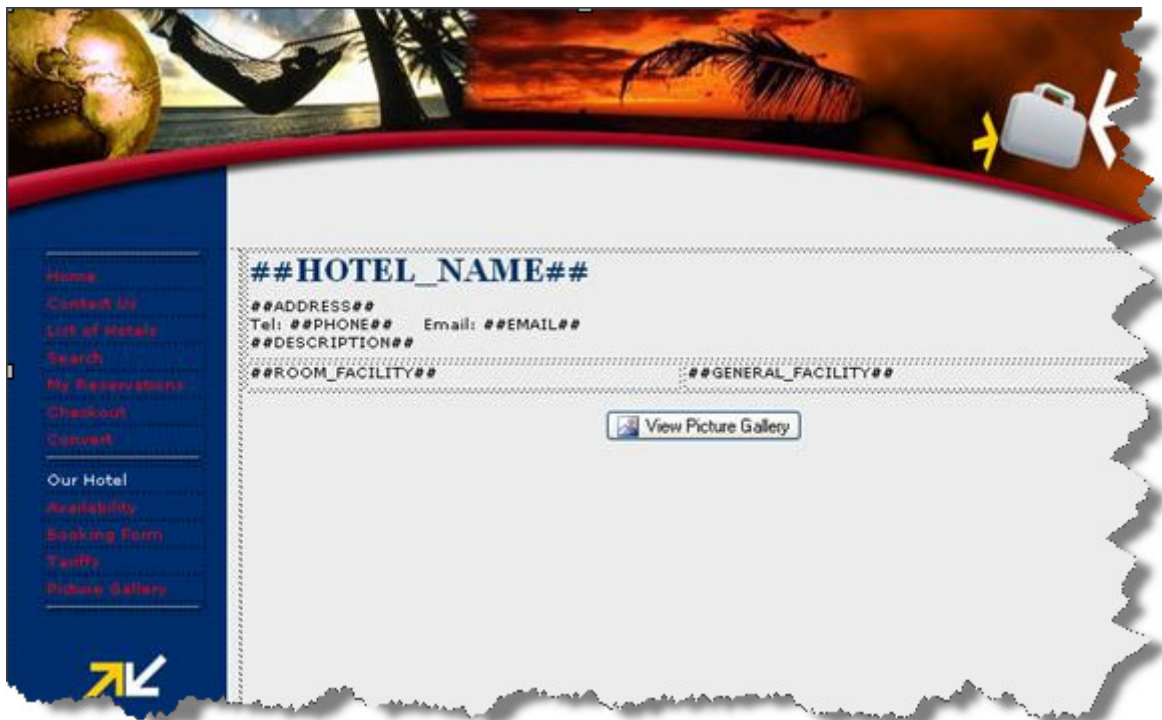
These are examples only and can be deleted. For the purposes of this manual we will add an image to the about page template (about.html)

The description in this manual is based on DreamWeaver, however most HTML editors work in a similar way.

TO BEGIN:

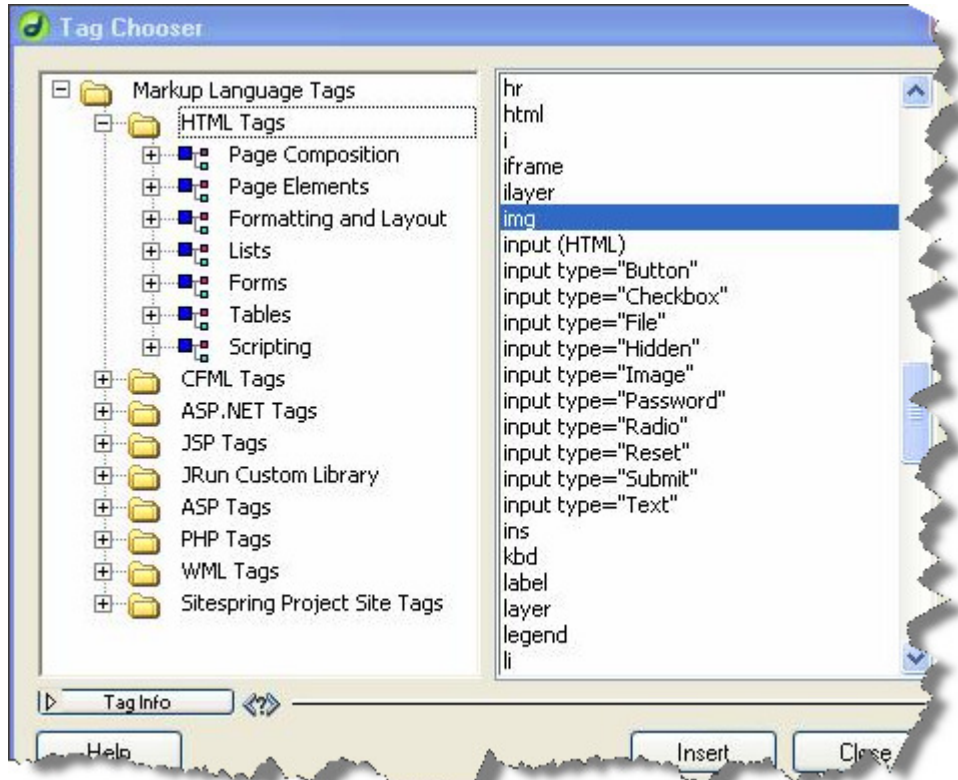
This example will show you how to add the "First_Pick_Bedroom" image to the about page template.

Open the template (about.html) in an HTML editor. You will see a page similar to the one below. (The layout may vary depending on the template set you have chosen).

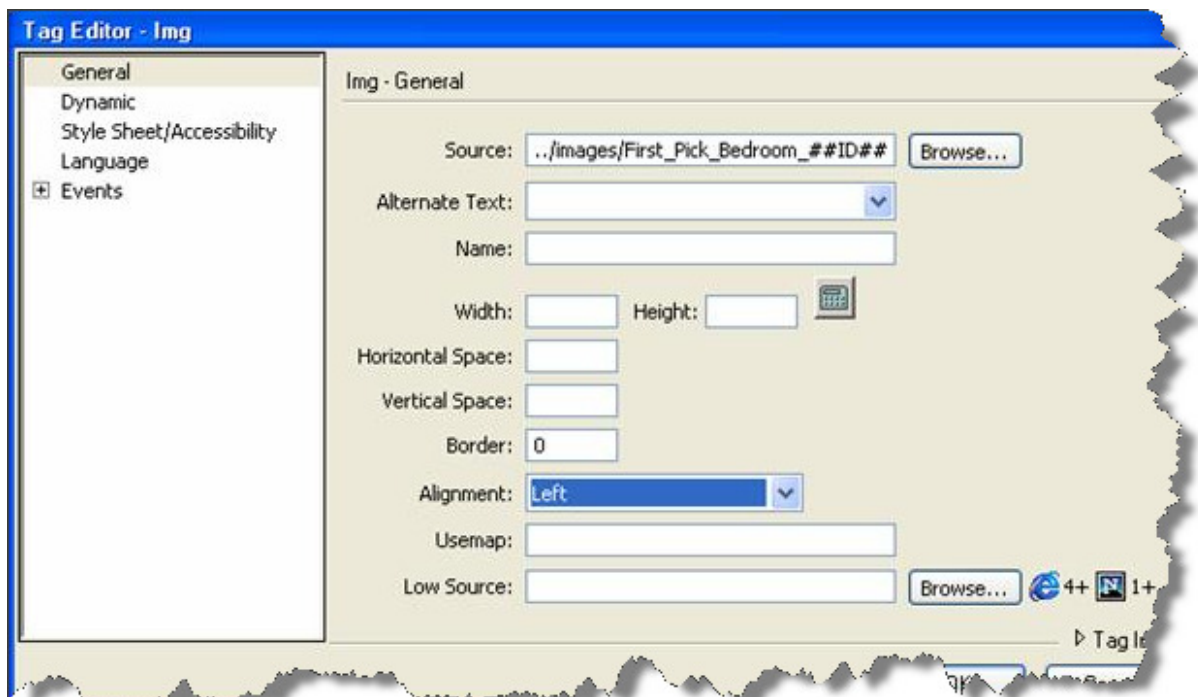


We will now add an image to the template between the line containing the email address and the description, ie. Between the **##EMAIL##** and **##DESCRIPTION##** markers.

Place the cursor at the end of **##EMAIL##** and press the "Enter" key to create a new line. Click "Insert" then "Tag" from DreamWeaver's menu bar. You will see a dialogue box like the one below.



Expand the “HTML Tags” folder by clicking the + box then select “img” in the right hand pane and press the “Insert” button. A new dialogue box like the one below will be shown.



In the “Source” box enter the image name and it’s location. Remember the images were placed in ..\MyDocs\images so the location relative to the about page is “../images”. We are going to add the “First_Pick_Bedroom” image. Remember that this set of images is called First_Pick_Bedroom_0001.jpg, First_Pick_Bedroom_0002.jpg etc. However we will use the ##ID## marker instead of the actual property ID. Therefore the image name is “First_Pick_Bedroom_##ID##.jpg”

To add this image enter ../images/First_Pick_Bedroom_##ID##.jpg into the “Source” box. You can also set Alternate Text, Name and Alignment if you wish. Press the “OK” button after the data has been entered into the dialogue box.

The “Tag Editing – Img” dialogue will close. If tyou want to add another image repeat this process otherwise click the “Close” button in the “Tag Chooser” dialogue.

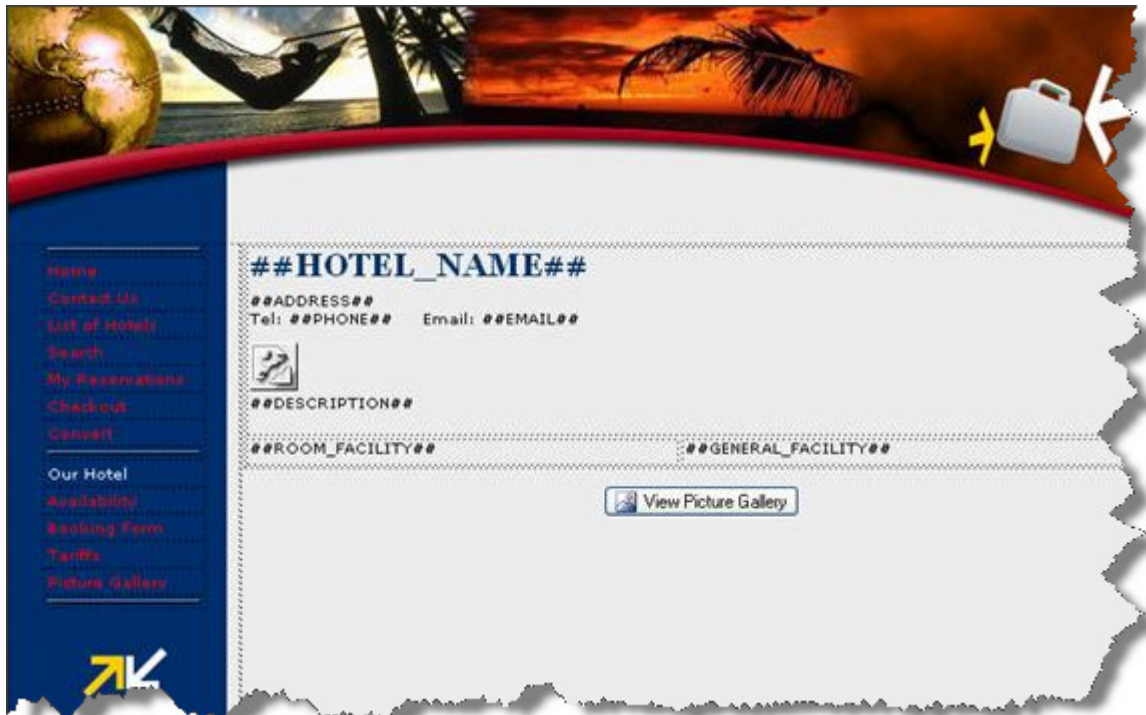
You have now added an image to the about page. When you publish the pages each about page will contain an image called “First_Pick_Bedroom_XXXX.jpg” where XXXX is the property ID.

If you view the page code the image tag we have just entered will look like this:

```

```

The about page should now look like this illustration below. Note that it now has an image between the ##EMAIL## and ##DESCRIPTION## markers.



NOTES:

1. When you view the template in DreamWeaver you will see a broken icon at the point where you inserted the image. However, the correct image will be displayed in the published pages.
2. ..\ is the folder to publish you selected in RezEasy configuration.